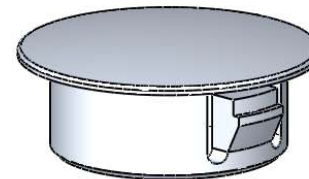
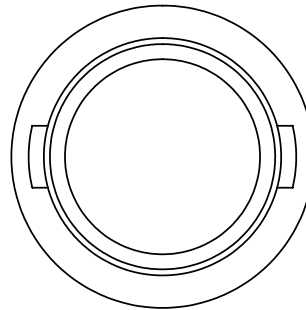
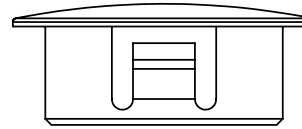
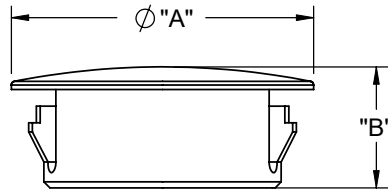


PART NO.	MAX PANEL THICKNESS	HOLE DIAMETER	"A"±0.5	"B" REF
PGM-4	1.6 [.063]	4.7-4.9 [.185-.193]	6 [.24]	5.2 [.20]
PGM-6		6.3-6.5 [.248-.256]	7.6 [.30]	5.6 [.22]
PGM-7		7-7.1 [.276-.280]	11 [.43]	7 [.28]
PGM-8		7.6-8 [.299-.315]	9.5 [.37]	6 [.24]
PGM-9	1.2 [.047]	9.5-9.6 [.374-.378]	13 [.51]	6.5 [.26]
PGM-10	1.4 [.055]	9.6-10 [.378-.394]		6 [.24]
PGM-13	2.1 [.083]	12.7-13 [.500-.512]	17 [.67]	8 [.31]
PGM-16	2 [.079]	15.9-16 [.626-.630]	20 [.79]	7.7 [.30]
PGM-19	3.2 [.126]	18.9-19 [.744-.748]	23.5 [.93]	10.5 [.41]
PGM-22	3 [.118]	21.9-22 [.862-.866]	26 [1.02]	9.6 [.38]
PGM-25	3.2 [.126]	25.4-25.6 [1.000-1.008]	28 [1.10]	12.7 [.50]
PGM-30		30.5-30.6 [1.201-1.205]	34 [1.34]	13 [.51]



- NOTES:  
 1. MATERIAL: NYLON 6/6 UL 94 V-2 (RMS-01).  
 2. COLOR: BLACK.  
 COLOR WHITE, AVAILABLE BY SPECIAL ORDER ONLY.  
 3. ALTERNATE UNITS FOR REFERENCE ONLY.

TITLE: <b>PUSH GROMMET HOLE PLUG [M SERIES]</b>						DWG IN mm [IN]	
CREATED USING SOLIDWORKS	FILE #: PGM CA	DWN: SK	APP: S.K.	FINAL			
GENERAL TOLERANCE UNLESS OTHERWISE NOTED ±0.25 ANG.±1°	SHEET: 1 OF 1	SHEET SIZE: A	DT: 01/08/08	CHKD: D.Z.	PART #	PRINT TYPE	
RE: <b>RICHCO, INC.</b>					<b>SEE TABLE</b>		<b>CA</b>
<b>RICHCO, INC.</b> ENG@RICHCO-INC.COM (773) 539-4060							

REV.	DESCRIPTION	ENGR.	DATE
E	SEE CO 200101 FOR CHANGES	SK	01/09/08
-	SEE ENGINEERING FOR REC A-D	-	--